



# T 10

OPERATING  
TABLE

T 10-10

Quality & performance  
you can trust, completely





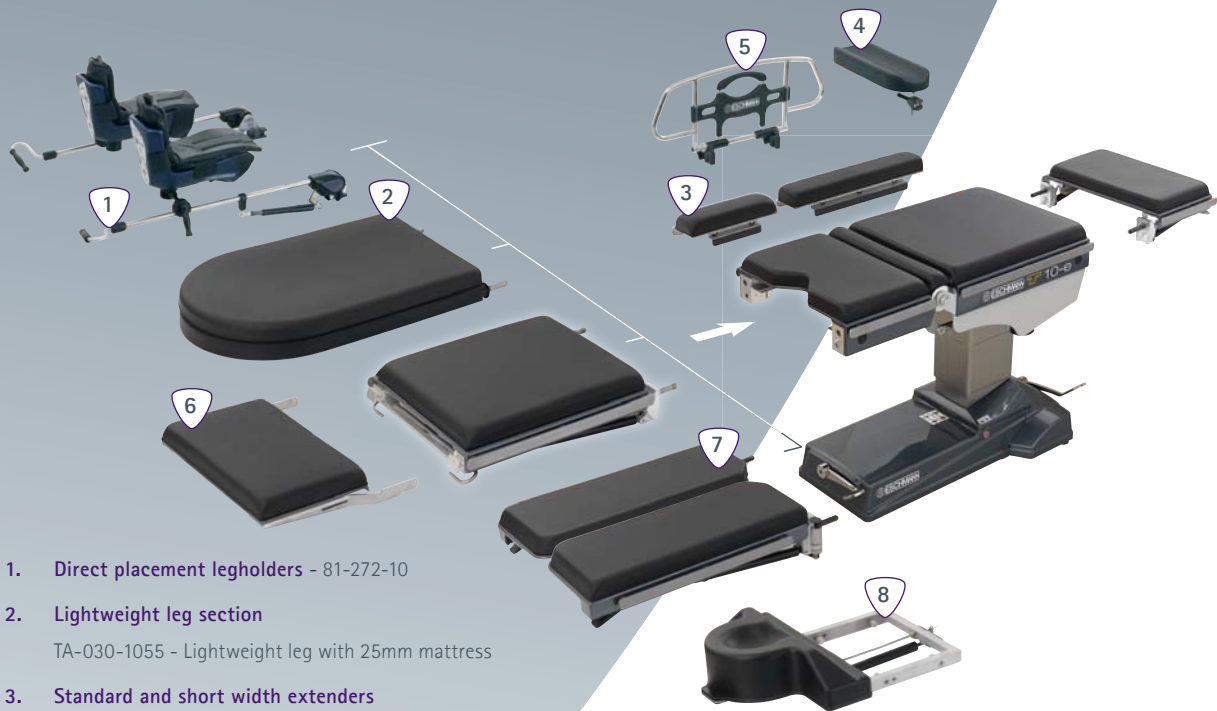
# T10

## THE T10 FROM ESCHMANN

In terms of quality and reliability Eschmann operating tables are acknowledged as being second to none, the very best in medical engineering technology for over 100 years – our assurance for your complete confidence.

The Eschmann philosophy is one of working closely with the people who matter the most - the surgical clinicians and operating theatre professionals who use our world class products. This close cooperation has allowed us to develop T10 Operating Table featuring a host of benefits that consistently exceed the exacting demands required in today's operating theatre environment.

- 250kg maximum patient weight and extendable 600mm wide top to suit all body types
- "Velcro-free" mattress attachment provides the ultimate 'easy clean' infection control solution
- Auto-locking, interchangeable head and leg sections offer optimum patient positioning options
- Easily maintained, impact resistant ABS covers prevent fluid and dirt ingress
- Corded handset for simple, intuitive control
- Improved patient support is achieved by adopting a one piece mattress that seamlessly spans the table break
- A choice of UK, Euro and US side bars ensures full compatibility with all accessory systems



1. **Direct placement legholders** - 81-272-10

2. **Lightweight leg section**  
TA-030-1055 - Lightweight leg with 25mm mattress

3. **Standard and short width extenders**  
TA-020-2033 - Standard with 50mm mattress  
TA-020-2035 - Short with 50mm mattress

4. **Armboard** - 81-300-19  
(Requires drop handle direct on clamp TA-020-1084)

5. **Cot sides** - 81-462-77

6. **Footrest/extension**  
TA-020-3037 - Footrest with 50mm mattress

7. **Divided leg section**  
TA-030-3078 - With 50mm mattress (UK Side Bars)

8. **Ophthalmic / ENT headrest** - 81-466-40



# T10

## THE GENERAL SURGERY SPECIALIST

### Flexible performance

The Eschmann T10 offers outstanding imaging access and functionality, with a full length X-ray cassette tunnel accessible from either end. A wide range of patient positions can be achieved using a small number of accessories.



Supine position with x-ray cassette



Full body x-ray imaging for cardiovascular



Supine with divided leg sections



Reverse Trendelenburg with footrest/extension



Left lateral position over tabletop in extension with footrest/extension



Seated beach chair position



Fully featured brochures available online & CD  
[www.eschmann.co.uk/t10](http://www.eschmann.co.uk/t10)

# SPECIALIST SURGERY

## Specialist performance

The T10 can be quickly and easily configured for a range of specialist procedures including: Gynaecology, Urology, Colorectal, Neurosurgical and Spinal surgery procedures using a range of Eschmann accessories, gel supports and pads.



Lithotomy position using direct placement legholders



Knee/chest positioning using footrest/extension



Prone position in extension with support strap



Prone position with laminectomy support



Supine position with neurosurgical skull clamp



Supine with ophthalmic /ENT headrest



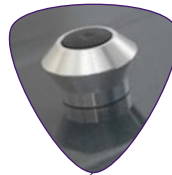
Prone position with neurosurgical headrest

## TABLE FEATURES & BENEFITS



### Easy adjustment

Smooth and easy adjustment of head and leg sections with just one hand. Automatic self-locking mechanism ensures patient safety at all times.



### Secure mattress fixings

Mushroom caps provide a simple secure fixing for mattresses, without the need for Velcro, allowing them to be easily cleaned.



### Easy configuration

Head and leg sections can be easily and quickly changed using the 2-stage lock and release system allowing multiple configuration options.

### Choice of bases

The 'm' base has large castors allowing easy manoeuvrability with or without the patient on the table. Manual 3-point brake system mimics most popular trolley transfer systems. The 'e' base offers a lower, more traditional profile with a smaller footprint. Both base options feature foot pedals at the table ends, which allow the bed to be positioned right alongside the tabletop for easy patient transfer.

### Intuitive control

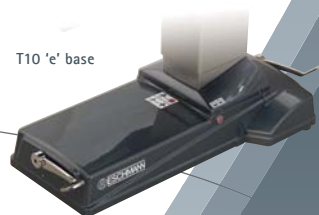
Lightweight, easy to use, corded handset can be conveniently hooked over the side bars or at the end of the table for immediate access.



T10 'm' base



T10 'e' base



## Ordering Information

T10 operating table complete with 50mm mattress, corded handset, UK mains cable and UK side bars.

T1E-117-4401 - T10-e ('e' base) [220-250v]\*

T1M-123-4101 - ('m' base) [220-250v]\*

T10 operating table complete with divided leg sections, 50mm mattress, corded handset, UK mains cable and UK side bars.

T1E-119-4401 - T10-e ('e' base) [220-250v]\*

T1M-124-6101 - ('m' base) [220-250v]\*

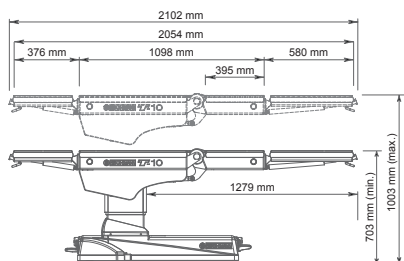
\*110v variant also available - ask for details.

Euro and US side bar variants available. Please contact your local Eschmann representative for further details.



# T10

## DIMENSIONS & ARTICULATIONS



Length and height dimensions

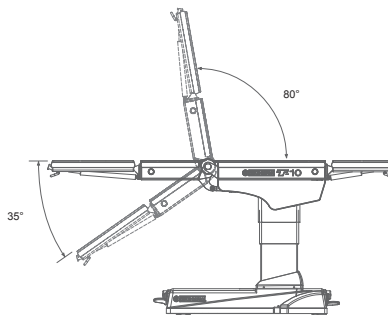
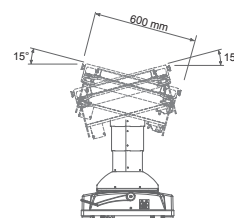
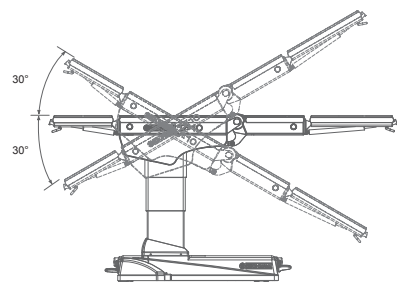


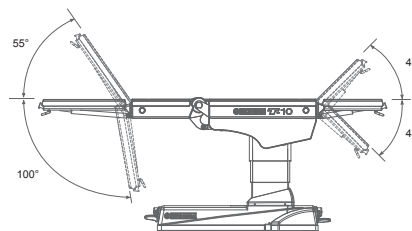
Table break movements



Lateral tilt movements



Trendelenburg and reverse Trendelenburg movements



Head and leg flap movements


### Service

Eschmann products are supported by a worldwide network of fully trained engineers, offering high quality Eschmann spare parts. For further information on the range of Service Contracts available, please contact your local Eschmann representative.

### Shipping

Net weight 231kg (with mattress)  
Gross weight 279kg  
Export case dimensions  
168 x 102 x 101cm

### Further Information



Fully featured brochures available online & CD  
[www.eschmann.co.uk/t10](http://www.eschmann.co.uk/t10)

Imagery in this publication has been taken to illustrate the operating table movements and as such does not constitute a guide to correct patient positioning.

All T10 operating tables are CE marked in compliance with the Medical Device Directive 93/42/EEC



All products are latex free.

#### Dealer Information

Innovation. Technology. Confidence.



Eschmann Holdings Ltd, Peter Road, Lancing, West Sussex, BN15 8TJ.

The details given in this leaflet are correct at time of going to press. The 'Eschmann' name and logo are trade marks of Eschmann Holdings Ltd. 'Eschmann Equipment' is a trading name of Eschmann Holdings Ltd.

Tel: +44 (0) 1903 753322  
Fax: +44 (0) 1903 875789  
[www.eschmann.co.uk](http://www.eschmann.co.uk)